

INTRODUCTION

A peer group is a tool that allows you to define and save a list of entities and use that list to filter data. You can use peer groups in any of COALdat's software components, in multiple data sets, and across any RDI database product.

Using peer groups and the Peer Group Manager, you can create, edit, use, and save data specific to the entities included in your list. Peer groups can be stored in a network file so that multiple users can access saved groups.



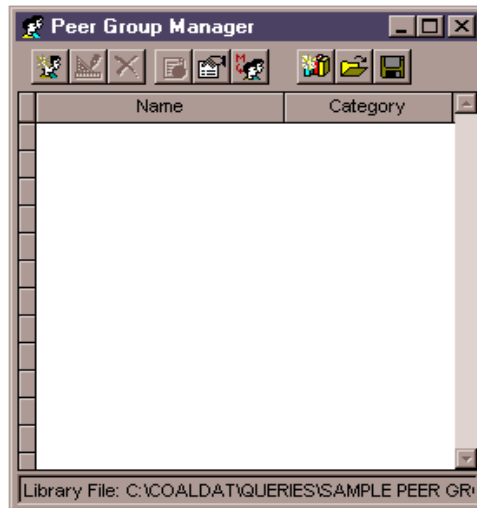
The Peer Group Manager can be accessed at any time by clicking the **Peer Group Manager** button on the main toolbar, or by using the View menu and selecting the Peer Group Manager option.

The Peer Group Manager has three primary functions:

- An organizational tool that allows you to manage lists of entity names in a library for later use
- A filtering tool that allows you to create, edit, and save entity lists in an efficient manner
- A tool for viewing data for a selected peer group

THE PEER GROUP MANAGER

The Peer Group Manager window lists the peer groups in your default Peer Group Library. From it, you can create new peer groups, open existing peer groups, and edit or delete unused peer groups.



The toolbar on the Peer Group Manager window allows you to open your saved peer groups, then reuse and revise the data they contain.



The **New Peer Group** button allows you to create a new peer group by selecting from a list of available entities.



The **Edit Peer Group** button allows you to add or delete entities from a previously created peer group.



The **Delete Peer Group** button allows you to permanently delete a peer group from the peer group library.



The **Data Navigator for Selected Peer Group** button launches the Data Navigator with all available information for that peer group.



The **RDI Doc Retriever** button launches your web browser to connect to RDI Online and extract data for the selected peer group.



The **Create Peer Group from POWERmap Selection** button allows you to use data from POWERmap to create a peer group that can be used in COALdat. This button only appears if you have POWERmap (or POWERmap in MapInfo Professional) on your system. For more information on POWERmap, contact an RDI sales representative.



The **New Peer Group Library** button allows you to create a new file to hold saved peer groups.



The **Open Peer Group Library** button allows you to open existing libraries containing previously saved peer groups.



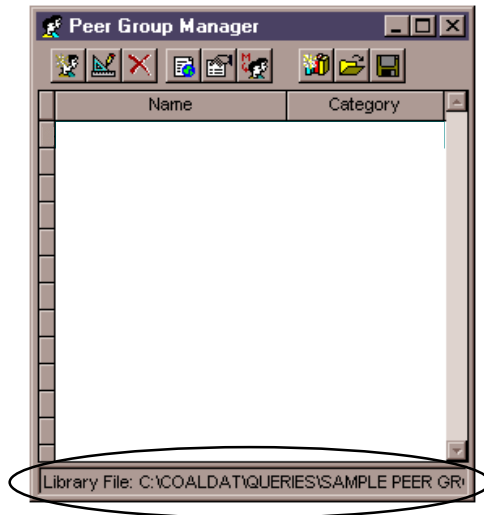
The **Save to Existing Peer Group Library** button allows you to save a selected peer group to another peer group library.

Creating a New Peer Group Library

Before creating a new peer group, you will need to set up a library in which to save the new group.



1. Click the **Peer Group Manager** button on the main toolbar.
2. Click the **New Peer Group Library** button on the toolbar in the Peer Group Manager window.
3. The Save As window appears. Enter a file name for the library. For this example, call the new library *Sample Peer Groups.pgd*.
4. Click **OK** to accept this new library name and return to the Peer Group Manager window. Notice the name of the peer group library in the bar at the bottom of the Peer Group Manager window.



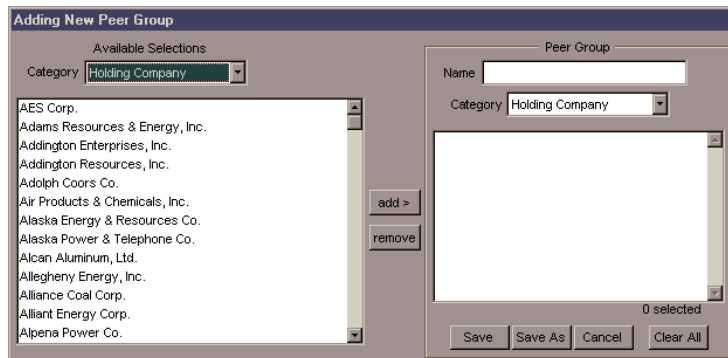
NOTE: You can share peer groups with other users by creating a peer group library on a shared network drive.

Creating a Peer Group from the Peer Group Manager

This example will create a peer group that contains all mines or coal sources controlled by the Apple Coal Company and Arch Coal, Inc.

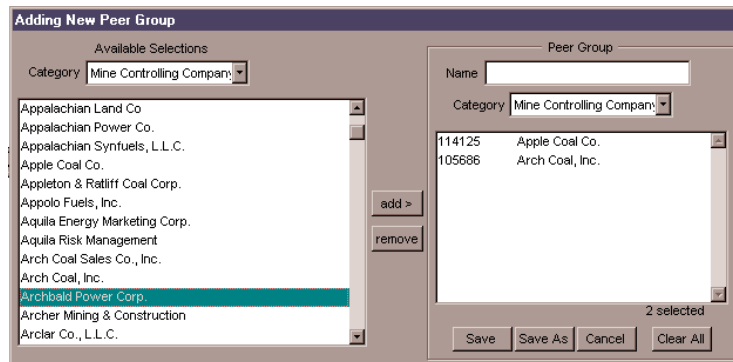


1. Click the **New Peer Group** button on the Peer Group Manager toolbar. The Adding New Peer Group window appears:

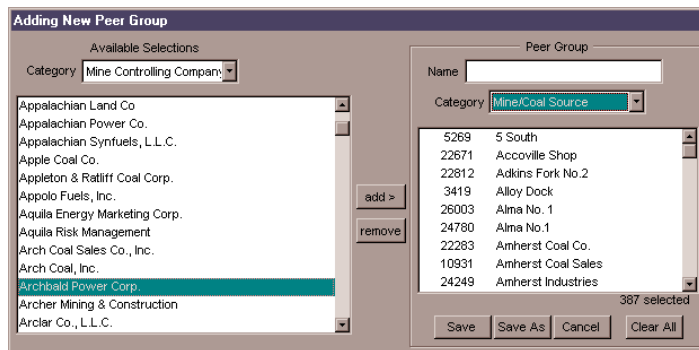


- On the left side of this window, select a Category from the drop-down list. In this case, select Mine Controlling Company to bring up a list of all the controlling companies in the database.
- Scroll down the list of available items and add Apple Coal Co. and Arch Coal, Inc. to the list on the right by double-clicking them or highlighting them and clicking **Add**.

You can also remove selected entries by highlighting them and clicking **Remove**, or clear the selected list by clicking **Clear All**.

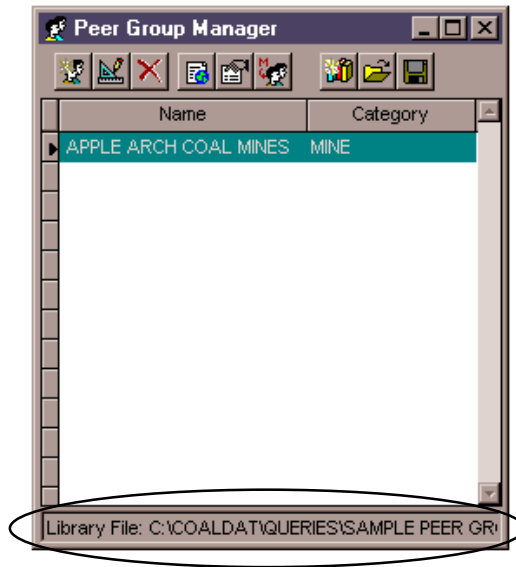


- Next, to view mines and coal sources controlled by Apple Coal Company and Arch Coal, Inc., choose Mine/Coal Source from the Category drop-down menu on the right side of the window.



- Enter a name for your new peer group. The Name field is limited to 30 characters, so call this peer group *Apple Arch Coal Mines*. Click **Save**, and the new peer group will be saved into the library that is currently active. You return to the Peer Group Manager window.

Note that the location of the peer group library appears at the bottom of the Peer Group Manager window.

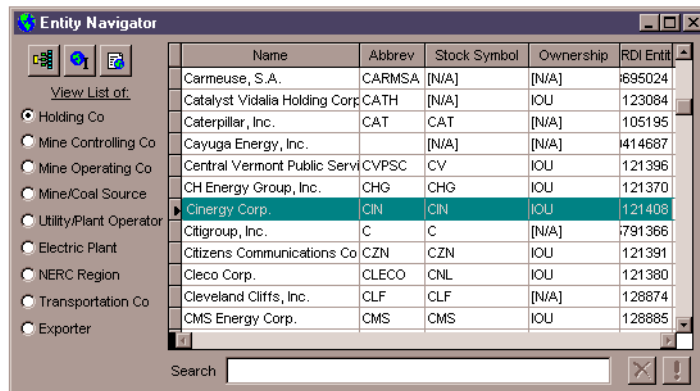


Creating a Peer Group from the Entity Navigator

You can create peer groups from any list of entities, including the Entity Navigator.

In the following example, creating a peer group through the Entity Relationships feature allows you to view data for all electric plants held by Cinergy Corp.

1. Close all windows from the previous example.
2. Open the Entity Navigator from the View menu.
3. On the Entity Navigator window, select Holding Co. in the list on the left by clicking its option button.
4. Find the Cinergy Corp. in the entity list. You can either scroll through the list of entity names, or use the following quick search function:
 - a. Type “Cin” in the header bar of the Name column.
 - b. Click the **Enter** key to start the search. The Cinergy Corp. is the first item on the list to contain your keyword, so COALdat highlights it for you.





- Click the Entity Relationships button.
- When the Entity Relationships window appears, change the entity type to Electric Plant to display all electric plants associated with Cinergy Corp.
- Click the **Create Peer Group from Grid** button on the main toolbar. The

Name	State	Country	RDI Entity
Beckjord	OH	USA	86378
Brownsville Peaking Power	TN	USA	384775
Caledonia Power Project	MS	USA	384772
Cayuga	IN	USA	81705
Connersville	IN	USA	81706
Dicks Creek	OH	USA	82777
East Bend	KY	USA	83611
Edwardsport	IN	USA	81709
Gallagher	IN	USA	81713
Gibson	IN	USA	88578



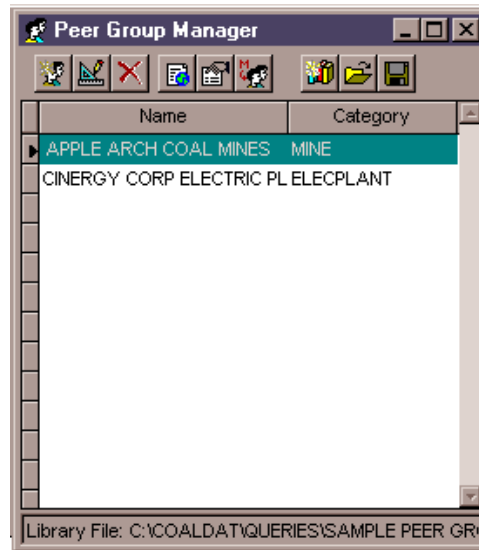
Adding New Peer Group window appears.

- On the Adding New Peer Group window, the list on the left includes all electric plants in the database. The list on the right contains only the electric plants that make up Cinergy Corp.

You can use click **Add** or **Remove** (between the available and selected items lists) to make changes to the peer group list. For this example, however, leave the default list intact.

- In the Name panel, enter a name for the peer group. The field is limited to 30 characters; call it *Cinergy Corp Electric Plants*.

- Save the peer group by clicking **Save**. This peer group will be automatically saved into your default library.

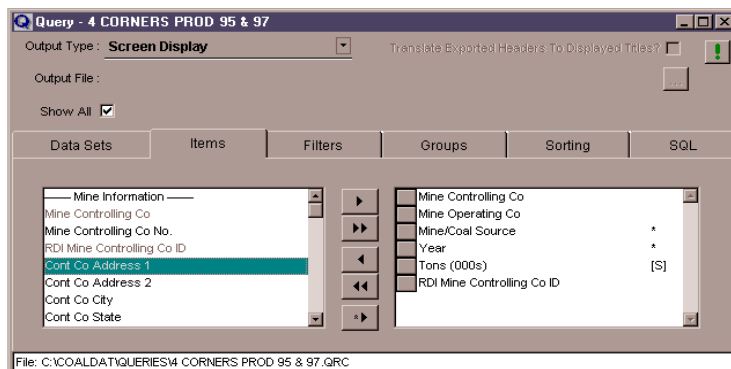


NOTE: If you have not yet created a Default Peer Group Library, you will be prompted to do so. For details, please refer to the Creating a New Peer Group Library section of this chapter.

Creating a Peer Group from a Data Grid

You can also create a peer group from almost any COALdat data grid.

- Close all windows from the previous example.
- Click the **Open Query** button on the main toolbar. On the Open Query window, navigate to the folder in which you saved the *4 Corners Prod 95 & 97* query that you created previously and open it.
- COALdat cannot create a peer group without a designated ID field. So move to the Items tab and add the RDI Mine Controlling Company ID item.



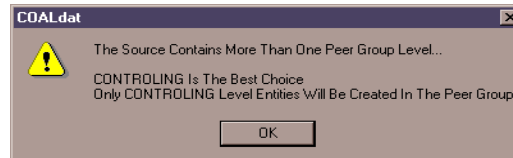
- Run the Query by clicking the **Process** button.



- When the data results grid appears, click the **Create Peer Group from Grid** button on the Grid Tools toolbar.

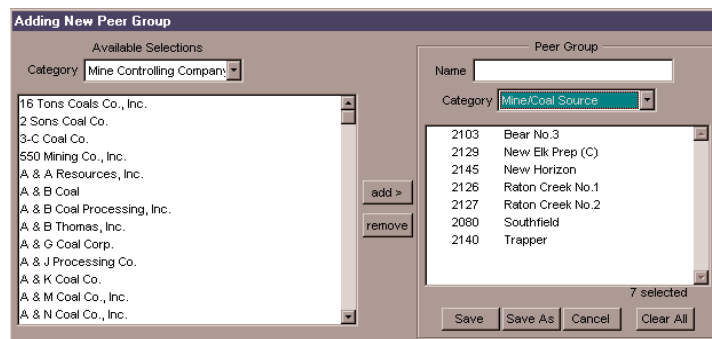
NOTE: If you have conflicting levels of information in your query, a message window informs you which field will be used in creating the peer group. In general, COALdat will default to the higher entity level.

- In this example, the Mine Operating Company field is in conflict with the Mine Controlling Company field. Click **OK** on this message window to have COALdat decide which of the two fields to use.

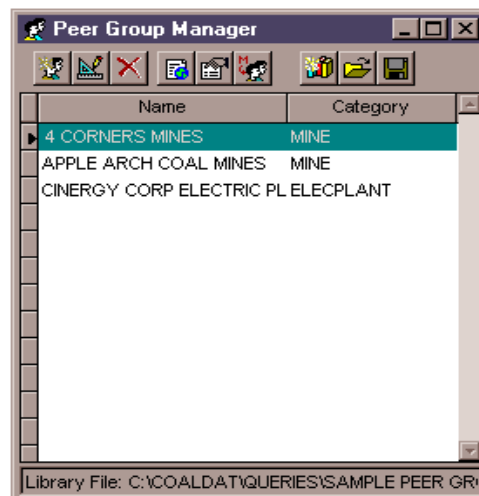


The Adding New Peer Group window appears. All of the companies that resulted from the query have been preselected on the peer group list.

- Next, view a list of mines associated with the selected companies by changing the Category drop-down list (under the Name panel on the right side of this window) to Mine/Coal Source.



- Name the peer group *4 Corners Mines*, and then click **Save**. The peer group will be saved into your default peer group library, and it can be accessed from the Peer Group Manager for use in other data sets.

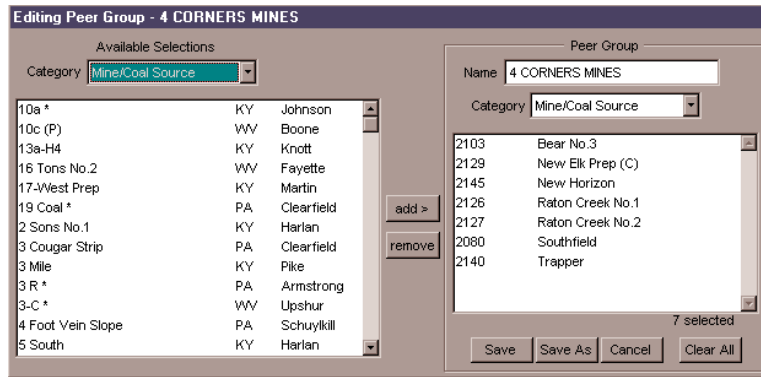




Editing Peer Groups

Peer group settings can be edited by using the **Edit Peer Group** button, which is available in the Peer Group Manager when a peer group has been selected.

The Editing Peer Group window is very similar to the Adding Peer Group window and functions in the same manner. You can use it to add or remove entities from your peer group.



To save your changes in place of the original file, click **Save**. To save changes to a new file, click **Save As**, and give the new file a name when the Save As window appears.



Deleting Peer Groups

The **Delete Peer Group** button is active in the Peer Group Manager when a peer group has been selected. It allows you to remove peer groups that are no longer in use.

On the Peer Group Manager window, highlight the peer group you wish to delete and click the **Delete Peer Group** button. A message window will appear, asking you to confirm your deletion. Click **OK** to confirm, and the peer group will be removed from your peer group library.

You can also choose more than one peer group to delete at once by holding down the **Ctrl** key on your keyboard as you select multiple items with your mouse.

USING PEER GROUPS IN OTHER COALDAT COMPONENTS

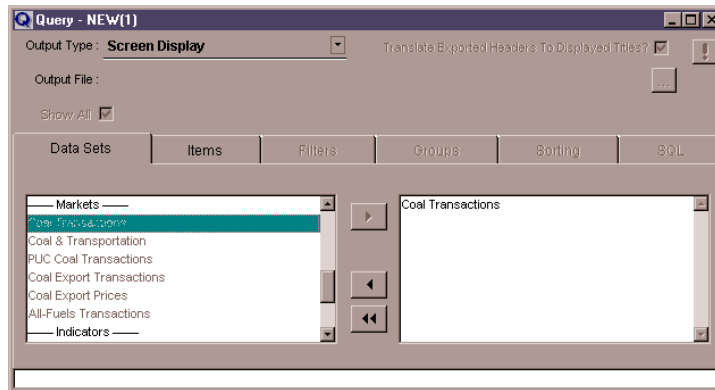
Once you have created a Peer Group, it can be used in conjunction with Profiles, Analyzers, and the Query Builder.

Using Peer Groups from within the Query Builder

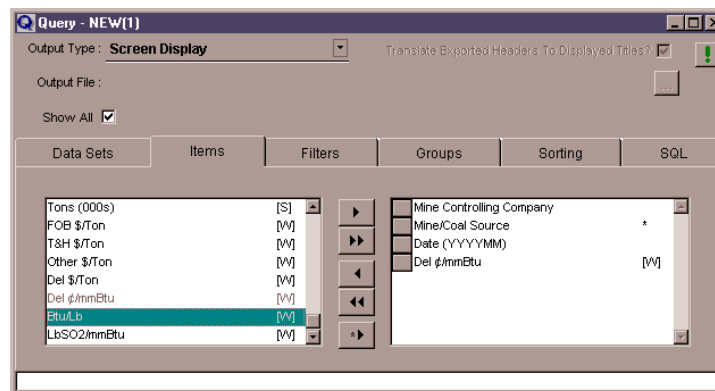
You can use a previously created peer group on the Filter tab of the Query Builder.



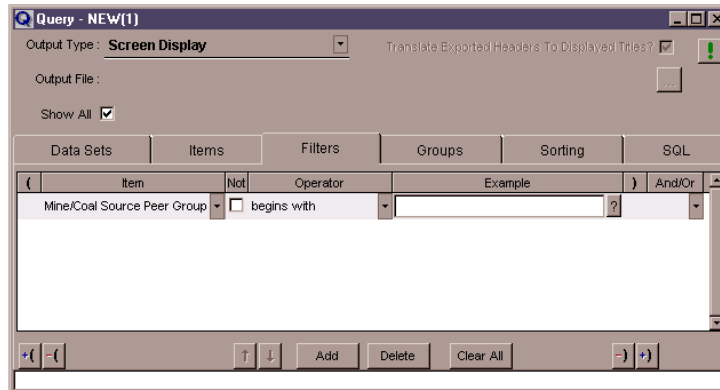
1. Launch a new Query by clicking the **Create New Query** button on the main toolbar.
2. On the Data Sets tab, select Coal Transactions.



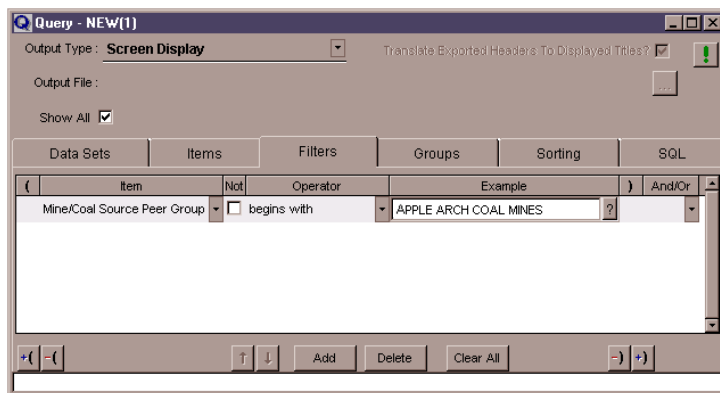
3. On the Items tab, select Mine Controlling Company, Mine/Coal Source, Date (YYYYMM), and Del ϕ /mmBtu.



- On the Filter tab, click **Add** to begin a new filter, then use the drop-down menu next to the Item field and choose Mine/Coal Source Peer Group. For this example, use begins with, the default Operator.



- Click the ? button next to the Example field. The Example Options window appears.
- Click **Choose From List** to bring up the list of available peer groups. The peer groups listed will be all those that contain information that can be accessed through the data set you designated on the Query Builder window.
- Double-click the Apple Arch Coal Mines peer group to populate the Example field in the Query Builder. Then click **OK** in the Example Options window to return to the Filters tab.



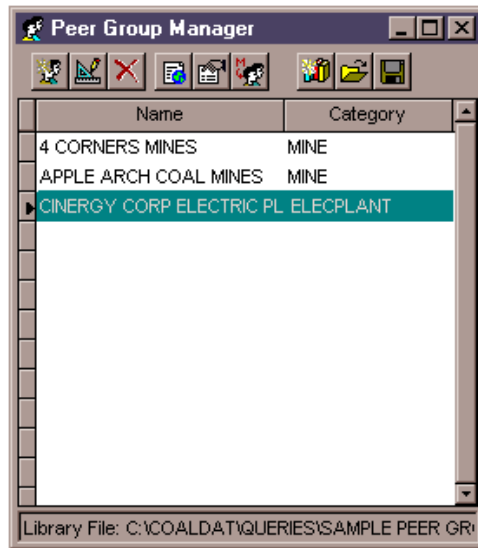
- You can process the query by clicking the **Process** button on the Query Builder window. When you are finished, close the query without saving.

Using Peer Groups through the Data Navigator

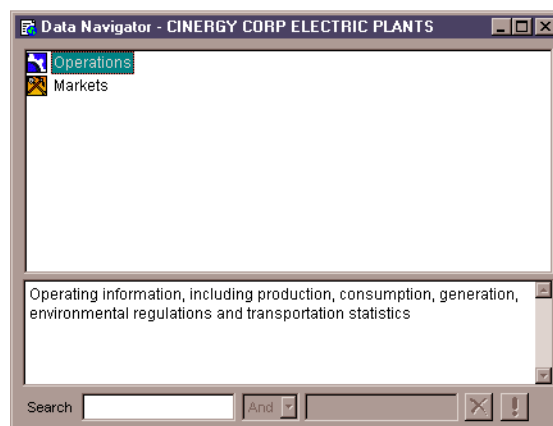
The Peer Group Manager allows you to access the Data Navigator for a single peer group. When opened from the Peer Group Manager, the Data Navigator will include only the software components that apply to the peer group subject.

In the following example, you will use a peer group in an Analyzer.

1. Close all windows from the previous example.
2. Launch the Peer Group Manager from the View menu on the main menu.
3. In the Peer Group Manager window, highlight the *Cinergy Corp Electric Plants* peer group that you created earlier in this chapter.



4. Click the **Data Navigator for Selected Peer Group** button on the Peer Group Manager toolbar (not on the main toolbar).

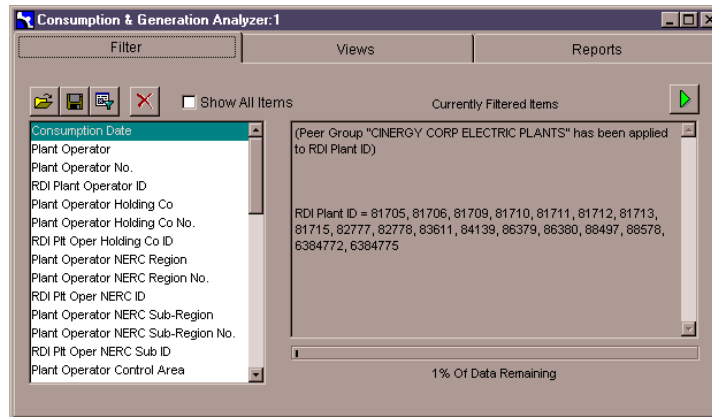


All data sets that apply to the entities in your peer group will be available. Note that the name of your peer group appears in the Data Navigator header bar.

5. Navigate down the information tree to Operations > Consumers > Consumption, Generation & Capacity > Consumption & Generation Analyzer.
6. When the Analyzer window appears, the Filter tab is pre-set to include the *Cinergy Corp Electric Plants* peer group.



You can clear the peer group by clicking the **Clear All Filter Selections** button, and the Analyzer will revert to its full data set.



Accessing a peer group through the Data Navigator can offer the option of launching the Comparative Analysis tool for your peer group. When it is available, clicking the **Comparative Analysis** button on the main toolbar generates a grid that you can modify or graph using the Grid and Graphing Tools.

NOTE: Because the Comparative Analysis feature must access data on all entities in a selected grid, using it in a very large data set may cause memory problems and can take time. RDI recommends that you refine your data set before using the Comparative Analysis tool.

USING PEER GROUPS IN OTHER RDI APPLICATIONS

Not only can you use peer groups in other COALdat components, but also in other applications developed by RDI.

Sharing Peer Group Libraries with other Database Applications

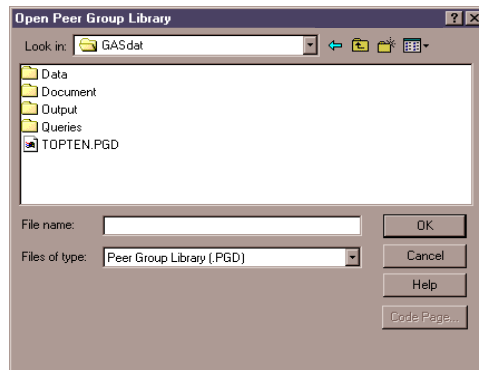
For any RDI database application – COALdat, POWERdat, GASdat, BaseCase – you can create peer groups, save them to peer group libraries, and then share those libraries with any of the other applications.

You could, for example, call up the Peer Group Manager in COALdat, and then use any of the peer group libraries that you created in POWERdat. By the same token, you could launch the Peer Group Manager in GASdat, and then switch to any peer group library that you created in COALdat.

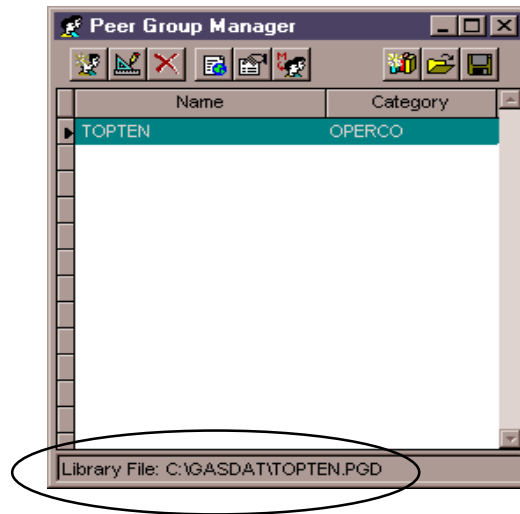
1. Close all windows from any previous examples.
2. Click the **Peer Group Manager** button on the main toolbar.
3. Click the **Open Peer Group Library** button on the Peer Group Manager toolbar. The Open Peer Group Library window appears.
4. Click the Look in drop-down list at the top of this window, and then navigate to the drive and folder that holds the Peer Group Library files (.pgd) for another RDI database application.



In the example below, the Peer Group Manager window shows the folder holding GASdat peer group libraries.



- Click **OK** to accept this information. The currently open peer group library appears as the Library File at the bottom of the Peer Group Manager window.



You can also see how this works by trying it in the opposite direction. Open another RDI database application that you may have: POWERdat, GASdat, or BaseCase. Then open a COALdat peer group library from within that application's Peer Group Manager.

Creating Peer Groups from POWERmap Selections

If you also have the POWERmap (or POWERmap Europe) application from RDI, then you can select information from any map layer and create a peer group in COALdat from that information.

For this example, a peer group will be created from a selection made in POWERmap.

- Make any selection of data in POWERmap. You could, for example, select all electric plants in the states of Washington and Oregon, as described in the POWERmap User Guide.



- Return to COALdat, and then click the **Peer Group Manager** button on the main toolbar.

- Make sure that the *Sample Peer Groups* library that you created previously is also the currently open library in COALdat. If it is not, then switch to that library in the manner described earlier in this chapter.



- Click the **Create Peer Group from POWERmap Selection** button on the Peer Group Manager toolbar. COALdat will show its progress as it builds a peer group from your POWERmap selection.

- A message window will appear telling you the number of records to be added to this peer group, and asking if you want to continue building it. Click **Yes**, and the Adding New Peer Group window appears. The information that appears in this window corresponds to the selection you made in POWERmap.

From here you can make further changes to the peer group, name it, and then save it to the *Sample Peer Groups* library.

For more information on POWERmap, please refer to the POWERmap documentation, or contact your RDI account manager.

